



# Additional measures in EU legislation

First OIE "Whole Journey Scenario" Workshop  
in Europe  
25-27 April 2018, Poland

# Protection of Animals during Transport

The screenshot shows the OIE (World Organisation for Animal Health) website. The header includes the OIE logo and tagline "Protecting animals, preserving our future". There are language options for Français, English, and Español, and a search bar. A navigation menu includes Home, About us, Scientific expertise, Solidarity, Animal health in the World, and Standard Setting. The breadcrumb trail is Home > Standard Setting > Terrestrial Code > Access online. The main content area is titled "Terrestrial Animal Health Code" and includes a PDF icon. The specific chapter is "CHAPTER 7.3. TRANSPORT OF ANIMALS BY LAND". The preamble states: "These recommendations apply to the following live domesticated animals: cattle, buffaloes, camels, sheep, goats, pigs, poultry and equines. They will also be largely applicable to some other animals, e.g. deer, other camelids and rartites. Wild animals and feral animals may need different conditions." Article 7.3.1 states: "The amount of time animals spend on a journey should be kept to the minimum."

5.1.2005

EN

Official Journal of the European Union

L 3/1

I

(Acts whose publication is obligatory)

COUNCIL REGULATION (EC) No 1/2005

of 22 December 2004

on the protection of animals during transport and related operations and amending Directives 64/432/EEC and 93/119/EC and Regulation (EC) No 1255/97

THE COUNCIL OF THE EUROPEAN UNION,

- (4) Most Member States have ratified the European Convention for the protection of animals during international transport and the Council has given a mandate to the Commission to negotiate on behalf of the Community the revised European Convention for the protection of animals during international transport.

Having regard to the Treaty establishing the European Community, and in particular Article 37 thereof,

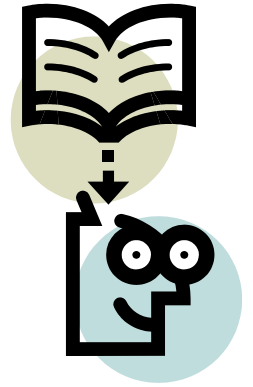
# Additional requirements - Applicability

OIE: " ... apply to" ... "cattle, buffaloes, camels, sheep, goats, pigs, poultry and equines. They will also be largely applicable to some other animals, e.g. deer, other camelids and ratites."

1/2005: "... transport of **live vertebrate animals** carried out **within the Community**"

# Additional requirements - Competence

OIE: "All people responsible for animals during journeys should be competent in accordance with their responsibilities."



1/2005: Transporter authorisation  
Driver/attendant certificate of competence  
Vehicle approval  
Approved assembly centres and control posts



# Additional requirements – Water, Feed, Resting (1)

OIE: "... maximum duration of a journey should be determined in accordance with factors such as ..."

1/2005: Maximum journey time is 8hours. This can be lengthened if **additional requirements** are complied with.

# Additional requirements – Water, Feed, Resting (2)

OIE: "Animals should be allowed to rest at resting points at appropriate intervals during the journey"

1/2005: watering and feeding intervals:

Cattle, sheep, goats: 14+1+14

Pigs and horses: 24

Unweaned animals: 9+1+9



Animals  
must then  
be rested  
for 24hours  
at a  
**control  
post**

# Additional requirements – Ventilation, Temperature

OIE: "adequate ventilation to meet variations in climate and the thermo-regulatory needs of the species" and "should be effective when the vehicle is stationary"

1/2005: "ventilation systems capable of maintaining a range of 5°C to 30°C with a +/- 5°C tolerance" (at any time)  
"minimum airflow of 60m<sup>3</sup>/h/kN of payload"



# Additional requirements – Space

*Transport by road*

Category	Approximate weight (in kg)	Area in m <sup>2</sup> /animal
Small calves	50	0,30 to 0,40
Medium sized calves	110	0,40 to 0,70
Heavy calves	200	0,70 to 0,95
Medium sized cattle	325	0,95 to 1,30
Heavy cattle	550	1,30 to 1,60
Very heavy cattle	> 700	> 1,60

These figures may vary, depending not only on the animals' weight and size but also on their physical condition, the meteorological conditions and the likely journey time.

1/2005: Space allowances for:  
horses according to age  
poultry according to age and weight  
cattle, sheep, goats, pigs according to weight

# Sanctions and Enforcement

"necessary action required to safeguard the welfare of the animals."

- Require the transporter to remedy the breaches observed
- Carry out additional checks on the transporter
- Suspend/withdraw authorisations/approvals/certificates of competence

# Relevant links

- Council Regulation (EC) No 1/2005 (welfare during transport)

<http://eur-lex.europa.eu/legal-content/EN/TXT/PDF/?uri=CELEX:32005R0001&qid=1524499571569&from=EN>

- Council Regulation (EC) No 1255/97 (control posts)

<http://eur-lex.europa.eu/legal-content/EN/TXT/PDF/?uri=CELEX:01997R1255-20070105&qid=1524499656510&from=EN>

[patrick.caruana@ec.europa.eu](mailto:patrick.caruana@ec.europa.eu)